

# RIDA

JOURNAL OF THE  
RHODE ISLAND  
DENTAL ASSOCIATION

AWARD  
NOMINATIONS

CONTINUING  
EDUCATION  
Registration Open for All 2019 Courses

END OF YEAR  
UPDATES





# MAINE DENTAL ASSOCIATION

ANNUAL CONVENTION  
MAY 31-JUNE 1

HARBORSIDE HOTEL, MARINA,  
AND SPA IN BAR HARBOR.

The Harborside offers spectacular views of Maine's coast, and is steps from Bar Harbor's downtown and whale watching tours, a few miles from Acadia National Park, and minutes from Hancock County-Bar Harbor Airport.

Dr. Harold Crossley, a well-known expert on the pharmacology of street drugs and chemical dependency, and practice management firm Jameson Consulting will be presenting continuing education courses at this year's event.

To register, or for more information, visit the Annual Convention page at [www.medental.org](http://www.medental.org).

A special thanks to Dr. Anthony DiMaio for sending us this little blast from the past!

Sent to him by a friend, Stephen Palmer, this photo was found in the Providence YMCA archives. Taken in 1912, the inscription on the back reads: *"A few of the many RI Dentists who gave their time and service to the state free of charge, in sending the boys away fully prepared. A great deal of credit is due these public spirited men as they were sorely needed"*.

We hope you all enjoy this little piece of Rhode Island dental history as much as we did!



## PROVIDENCE SAFE STATIONS

— ANY FIRE STATION, ANY TIME —

### STRUGGLING WITH ADDICTION?

**Providence: Safe Stations** is your connection to recovery. Visit any Providence fire station to connect to recovery services.

- **No referrals** needed and **free**.
- All Providence fire stations are open **24/7** for walk-ins.
- **Trained Fire/EMS and recovery professionals** will connect you to help.
- Call **(401) 942-STOP** to talk to a counselor 24/7.

**When you're ready, we're HERE for you.**

[WWW.PVDSAFESTATIONS.COM](http://WWW.PVDSAFESTATIONS.COM)



# IN THIS ISSUE

## EDITORIAL STAFF

ROBERT BARTRO, DDS / EDITOR

CHRIS KLIMECKO / ASSOCIATE EDITOR

MADLINE BENNER / ASSOCIATE EDITOR

## 2017-2018 OFFICERS

JENNIFER TORBETT, DMD / PRESIDENT

MARTIN ELSON, DDS / PRESIDENT ELECT

KARYN WARD, DDS / VICE PRESIDENT

JOHN KIANG, DMD / SECRETARY

GEORGE GETTINGER, DMD / IMMEDIATE PAST PRESIDENT

## RIDA STAFF

CHRIS KLIMECKO / EXECUTIVE DIRECTOR

MADLINE BENNER / OFFICE MANAGER

## BOARD OF TRUSTEES

KERRI-RAE AGIN, DMD / GUEST TRUSTEE

MATTHEW ALMEIDA, DMD / WOONSOCKET

FRANK DEQUATTRO, DMD / SOUTH COUNTY

FOTINI DIONSOPOULOS, DMD / CRANSTON

RAY ENGLISH III, DMD / KENT COUNTY

FREDERICK MCMILLEN, DDS / PROVIDENCE

WILLIAM NAUGHTON, DDS / PAWTUCKET

PETER SCHOTT, DMD / NEWPORT

## CONTACT US

Rhode Island Dental Association

875 Centerville Road

Bldg. 4, Suite 12

Warwick, RI 02886

P: (401)825-7700

F: (401)825-7722

[www.ridental.org](http://www.ridental.org)

[info@ridental.org](mailto:info@ridental.org)

American Dental Association

800.621.8099

[www.ada.org](http://www.ada.org)

## 1 FROM THE PRESIDENT

END OF YEAR UPDATE

## 5 RIMOM 2018

A TALE OF TWO PATIENTS

## 7 A DENTAL BENEFIT IN MEDICARE

FROM DR. JUDITH FISCH

## 9 CONTINUING EDUCATION

2019 COURSES

## 16 RIDA CALENDAR

A LOOK AT THE YEAR AHEAD

*Interested in contributing to the Journal?  
Contact us TODAY! The next deadline is  
April 1, 2019*



*Rhode Island Dental Association 875 Centerville Rd., Bldg. 4, Ste. 12 Warwick, RI 02886*

*The Journal of the Rhode Island Dental Association is a peer reviewed publication. Opinions expressed by the authors does not necessarily represent the policies of the Rhode Island Dental Association or the Journal of the Rhode Island Dental Association.*

*Beginning in 2018, the Journal of the Rhode Island Dental Association will be published four times a year in the winter, spring, summer, and fall.*

*For information regarding advertising, email: [info@ridental.org](mailto:info@ridental.org) or visit [www.ridental.org/news-classifieds/RIDA-Journal](http://www.ridental.org/news-classifieds/RIDA-Journal)*

# PRESIDENT'S END OF YEAR UPDATE

*By Jennifer Torbett, DMD;  
Rhode Island Dental Association President*

Since being installed in May, I have been working diligently to serve the Association. I've had the opportunity to meet with the South County, Newport, Cranston, and Pawtucket components and continue to attend breakfast meetings, when possible, with Dr. Zwetchkenbaum, RIDOH; our Executive Director, Chris Klimecko; Drs. Dodge and Barto, and other dental movers and shakers in the state.

In June, Chris and I had a great visit to University of New England in Portland, ME to participate in Vendor Day. We met several students who expressed interest in RI. We compiled a list of those contacts for these students and will keep the lines of communication open, possibly even provide an externship site in our state.

In October, Chris and I met with representatives from Eastern Dental Insurance Company to review our endorsement contracts and continued collaborative efforts. We also met with the Board of Trustees from the RI Foundation. I'm happy to report that we've been able to appoint Dr. Gettinger as a liaison to the Board.

I am incredibly proud of the success of our recent continuing education programs. We received great reviews for our last two speakers. We continue to provide outreach to members dentists in the form of a new dentist meeting in August and a holiday party for kids in December 8.

In October, I had the privilege of serving as delegate at the ADA House of Delegates meeting in Hawaii. The major topics reviewed were:

- Promoting hygiene license portability. Hopefully dental will be soon.
- Policies recognizing specialties and the definition of a specialty (task force).
- Requirement for Opioid Prescription CE
- Task force to investigate dental benefits and how the impact the dental/patient relationship
- Ad hoc committee to review medicare use by establishing minimal dental requirements
- Dues increase to \$554
- Limits to campaign funding (1st district)
- Support for HPV vaccinations
- Task force to study student debt
- Committee to review the idea of geriatrics as a specialty
- From the 1st district, President Elect to be elected by the ADA BOT, 2nd VP, speaker, and treasurer to be elected by HOD. This would require a bylaw change

A RIDPAC Grassroots event occurred in late October. We posed questions ahead of the event to the three gubernatorial candidates. We received a written response from Gov. Raimondo. Mayor Fung and candidate Trillo presented their answers in person on the night of the event. Also, at the event, we recognized several dentists who helped foster growth and support of the RIDPAC and our legislative efforts over the last 15 plus years. A call for participation and contribution was initiated to strengthen the PAC which will strengthen our relationship on the hill.

In November, Chris, Dr. Elson, and I had a productive meeting with the other five New England States at the President and President Elect meeting held in Maine. We discussed issues pertaining to our states from governance, public perception of dentistry, work force issues, and relationship we have with legislature, DSO's, and FQHC's. We also discussed the New England Dental Leadership Conference (NEDLC) which is held each year and rotates throughout the New England states. Based on constraints from the current model and a general lack of participation from the states, we decided not to hold the conference in 2019. Moving forward, a task force will study the current model and recommend necessary changes. One change which has already been adopted is moving the conference from being held annually to biannually.

For 2019, our Yankee Dental Conference contract was modified to exclude the sum of money normally given us to sponsor a Friday afternoon reception. Consequently, there will be no cocktail reception. RIDA member attendees are however invited to participate in an MDS sponsored event on both Thursday and Friday night.

We are still looking to fill an opening on the Board of Trustees. Dr. Ray English III has been nominated as Trustee to Kent County. Dr. Laila Kafi has taken on the role as president of the Providence component. We still have vacancies for the presidents of Kent and South County. At the state level, Dr. Sal Rizzutto was appointed as chair of the New Dentists Committee.

We are working on our communication with members. I cannot stress enough the importance checking your email, our main source of communication. Unfortunately, it may at times go to the spam folder. We have the quarterly journal, member directory, and the website as other resources. We are working on the ease of use and content on the website which is an ADA product. As for the Journal, we often find it difficult to obtain articles. Please consider writing an oral health-based piece for a future issue.

As an association, we struggle with the volunteer aspect. We need to identify and cultivate volunteers. The proposed component consolidation to regional supergroups would aid in this endeavor.



It would also help keep the components legally compliant. The Component Restructuring Ad Hoc Committee met several times, including hosting a town hall forum. This was attended by approximately seven additional dentists outside of the committee. The committee has taken information from these meetings and will present our recommendations. Ultimately, a resolution was presented at the November House of Delegates (HOD). A copy of the resolution can be found on the Members Only section of our website: [www.ridental.org/member-center/member-news](http://www.ridental.org/member-center/member-news). Please keep in mind that the proposed resolution is just that. The delegates have until May of 2019 to review and modify/amend as they see fit. At the next HOD, they can present amendments or leave it as is. For an amendment to be substituted, a vote is required. Either way, there will be a vote (or votes) in May. **We hosted a second Town Hall Forum on February 19th and another ad hoc committee meeting will take place on March 19th. Updates to these meetings will be in the next journal.**

Whether you like the plan as-is, have concerns or ideas for possible changes, or wish the plan to be voted down, please contact your component trustee (list on title page) and/or your ad hoc committee representative (list below) and let them know. We want whatever happens to be consistent with the wishes of the membership. This is your association.

There are other areas that I feel need to be reviewed, however, time constrictions have prevented that. I want to take a close look at the vitality of our councils and committees and have transparency with the proposed time commitments and missions of each. Also, I feel that in the future we need to review our strategic plan for continued success.

The past eight months have been productive. I look forward to the remaining months of my tenure as president. As always, feel free to contact me with any questions or ideas.

I hope you all had a wonderful and safe holiday season and a very Happy New Year!

*Jennifer Torbett, DMD*

#### **AD HOC COMMITTEE MEMBERS**

Dr. Jennifer Torbett (co-chair)  
Dr. Martin Elson (co-chair)  
Dr. Elizabeth Benz (Providence)  
Dr. John Biernacki (Pawtucket)  
Dr. Paul Calitri (Kent)  
Dr. Michael Reilly (Cranston)  
Dr. John Underhill (South County)  
Dr. Peter Schott (Newport)  
Dr. David Ward (Greater Woonsocket)  
Christy Durant, Esq. (RIDA Attorney)  
Mr. Chris Klimecko (RIDA Executive Director)

# AWARD NOMINATIONS

## **It's that time of year again!**

Nominations for the following awards are now open! Eligible participants are members of the RIDA. If you have someone you would like to nominate, please review each award and submit the names of those person(s) you believe fit the described criteria and a brief description of why they should be considered. ***Nominations can be sent to the Executive Office or emailed to Chris Klimecko, at [cklimecko@ridental.org](mailto:cklimecko@ridental.org)***

**The Dr. A. James Kershaw Award** - Presented to a member of the RIDA who has demonstrated honesty and integrity. A person who has made an outstanding contribution to the community while representing the goodwill of the dental profession.

**The Humanitarian Award** - Presented for outstanding public service to improve the quality of human life. This award is for someone who has provided leadership and volunteer efforts that reflect favorably upon the profession of dentistry. These acts of kindness exhibit a significant devotion of time, talent, and energy that contribute to a legacy that is inspirational to members of the dental profession and beneficial to the community.

**The RIDA Good Citizen of the Year Award** - Presented in recognition of a member who has demonstrated outstanding or unusual contributions or service to the community, state, or country. The award will be used to distinguish those contributions to areas such as government, environment, community, economics, public welfare, and/or an activity which improves the country, state, or community.

**The Dr. Joseph J. Box Everyday Leadership Award** - The Dr. Box Everyday Leadership Award is presented to that member of the Rhode Island Dental Association who has demonstrated the highest level of ethics and dedication to the improvement of the art and science of dentistry. The recipient has shown exceptional involvement in, and love for, dentistry on many levels; and has shown compassion for all members in society. In addition, the recipient has earned the universal respect of his or her colleagues.

# FROM THE EXECUTIVE DIRECTOR

*By Chris Klimecko*

*Rhode Island Dental Association Executive Director*

## **RIDA 2019**

2019 is shaping up to be a busy year. As I'm writing this, Yankee is already behind us. The RIDA booth was busy this year. Several members and show vendors stopped by as well as representatives from some of the dental schools that were there throughout the event.

## **President and President-Elect Meeting**

2019 is our year to host the First District President and President-Elect conference. The meeting occurs in the last quarter of each year and affords the presidents and presidents-elect from all six New England dental associations/societies a chance to meet and share ideas, along with various issues and programs from within their respective states as well as methodologies and practices that are working for them. This year's meeting will take place on November 1st and 2nd in Newport.

## **Past President's Plaque**

For those that have been to the RIDA office, you might remember that pictures of our current slate of officers, along with a few past presidents, were hung over the inside wall of windows in the conference room. The problem with this was that there was not enough room to post more than 6 to eight pictures, and we've got over 140 years' worth of presidents. Therefore, we are in the process of sourcing a past president's plaque—one that can hold the names of all past along with future presidents for many years to come. The pictures that we have are still with us and are being placed into an album that will always be on display in the office.

## **CE Survey**

In order to maintain our ADA CERP certification for continuing education, we are required to meet a variety of requirements. One of those involves surveying members regarding future course considerations. As it's been a few years since one of these surveys has been circulated, we have decided that it should be accomplished in 2019. Look for this to occur by mid-year.

## **In Closing**

Please keep in mind that each year, we publish four issues of the RIDA Journal. In order to do so, we need good articles. All members are welcome to contribute and are encouraged to do so. If you have something you would like to submit, please email it to us in MS Word format. From there it will go to the editor for approval.

Unless your article contains time sensitive material, there's no need to worry about our deadlines. If a submission is approved but doesn't make it here in time for a current issue, we'll move it to the next.

## **In addition to the items I've already mentioned, here are few others that we'll be involved in:**

- ADA Lobby Day: April 14-16, Washington DC
- CT Dental Association Charter Oak Meeting: May 8-10, Mohegan Sun Casino
- ADA President Elect, Management, and Membership Conference: July 22-26, Chicago IL
- ADA FDI World Dental Congress and ADA House of Delegates: Sept 4-9, San Fransisco - FREE Registration this year!



Our philanthropic arm; the Rhode Island Dental Foundation, is gearing up to accept grant proposals. Grant requests for will be considered for various oral health related causes. They include education and research programs designed to improve the art and science of dentistry in the State of Rhode Island, dental public service projects in Rhode Island, programs geared towards improving accessibility and availability of dental care for underserved citizens within our state, oral health education for the public, Rhode Island based charitable or educational projects related to oral health, and Rhode Island based free dental clinics.

Grant request forms will soon be made available via the RIDA website. A notice will be sent to all members when the form has been posted.





# FROM THE DENTAL DIRECTOR RHODE ISLAND DEPARTMENT OF HEALTH

SAMUEL ZWETCHKENBAUM, DDS, MPH

## ARE YOU AN AGE 1 DENTAL CHAMPION?

Dental visits for Age 1 are now the norm, and thanks to the great work of our partners at TeethFirst! the message is out! To get started seeing these young patients perform knee-to-knee examinations with the toddler's head in the dentist or dental hygienist's lap for a good view to perform a tooth brush prophylaxis and fluoride varnish application. With the legs supported by the parent, they can watch, learn and send positive messages to the child. Visit [www.teethfirstri.org](http://www.teethfirstri.org) for more information.

Doing it already? Sign up and let parents, physicians, and others know by visiting:  
<http://www.health.ri.gov/forms/registration/AgeOneChampionSubmissionForm.pdf>

## SAVE THE DATES!

All dental staff are invited to the 2019 Annual Rhode Island Dentistry Mini-Residency: March 29, 2019, 8:00-5:00 PM at the Crowne Plaza. This year's theme is Preventive Modalities. Continuing Education credit is provided.

The Rhode Island Oral Health Commission Annual Oral Health Summit will take place on May 8, 2019, 8:00 AM - 12:00 PM at the Providence Marriott, 1 Orms St., Providence. This year's theme is **Oral Health Equity**.

## SCHOOL DENTISTS

We regularly receive inquiries from schools looking for dentists to perform screenings of children at their schools. School Dentists tell us this is a fun way to help children with first steps for dental health. If you'd like us to pass your name on, let us know!

Additionally, a School Dentist meeting is planned for April 1, 2019, 6:30 PM at the Rhode Island Dental Association Office in Warwick. Invitations have been emailed, but if you have not received one and want to attend, please let us know. For both of the above, contact Veronica Rosa-DaFonseca at the Oral Health Program [v.rosadafonseca@health.ri.gov](mailto:v.rosadafonseca@health.ri.gov) or 401-222-2744.

## MEDICAID DENTAL CASE MANAGEMENT

Offices participating in the Adult Medicaid program are now eligible to receive additional payments to support unique and important case management services provided to individuals through a Pilot program. The following CDT codes will be reimbursed:

- D9991: addressing appointment compliance barriers
- D9992: care coordination
- D9993: motivational interviewing
- D9994: patient education to improve oral health literacy

Completion of online training is required and is available through the Medicaid/Medicare/CHIP Services Dental Association (MSDA) webpage: <https://www.medicaidental.org/learning%20series-1--10> Please contact Sandra Bates, [Sandra.bates@dx.com](mailto:Sandra.bates@dx.com) for more information or to sign up to participate in the pilot program.

## ONLINE SBIRT TRAINING

Dentists can obtain CE credit for learning about SBIRT: Screening, Brief intervention and Referral for Treatment. This is an evidence-based practice to detect and assist patients in your practice at risk for substance abuse. See <https://courses.cpe.asu.edu/browse/cabhp/courses/dentistry-sbirt-model> [courses.cpe.asu.edu] for more information and to register.

## DENTAL ASSISTANT REGISTRY

The Dental Assistant Registry is a collaborative effort of the Rhode Island Department of Health (RIDOH) and the Rhode Island Dental Assistants Association (RIDAA) and aims to improve our ability to communicate with dental assistants, a valued component of our oral health workforce. Dental assistants can voluntarily share their contact information and will begin receiving newsletters and other important RIDOH alerts that are already distributed to dentists and dental hygienists. Dental assistants can also receive notification of educational opportunities through RIDAA and affiliated educational institutions. Individuals may opt out of the Registry at any time.

Dental assistants who are interested in joining the Registry can do so online at <https://www.surveymonkey.com/r/LRQTJMP>.

## HPV COMMUNICATION RESOURCES

Dentists have a role in cancer prevention through the discussion of HPV vaccination. The American Academy of Pediatrics provides resources to help dental teams with that discussion.

- Oropharyngeal Cancer (OPC) and HPV Prevention in Children: 5 Key Points that Dental Professionals Need to Know : [https://www.aap.org/en-us/Documents/AAP\\_OPC\\_HPV\\_5KeyPoints\\_final.pdf](https://www.aap.org/en-us/Documents/AAP_OPC_HPV_5KeyPoints_final.pdf)
- Answering Questions About HPV Vaccine: A Guide for Dental Professionals: [https://www.aap.org/en-us/Documents/AAP\\_OPCHPV\\_WhatDentalProsNeedToKnow\\_final.pdf](https://www.aap.org/en-us/Documents/AAP_OPCHPV_WhatDentalProsNeedToKnow_final.pdf)

# RIMOM 2018

EACH YEAR AMONGST THE MANY PATIENTS SEEN AT RIMOM THERE ARE ALWAYS A FEW THAT TUG AT OUR HEARTS MORE THAN OTHERS.

## *The tales of two patients...*

### Joseph

Joseph found me on Saturday after multiple extractions to thank me for organizing this event. He went on to tell me he was getting married in December and was excited to get his partial. He gave me a hug, thanked me again and walked away.

Sunday morning, Joseph found me once again but this time with a big smile and in tears. He gave me another hug and thanked me again. He said he had no idea he would feel the way he did that moment. We shared a few celebratory tears together and then he went on to tell me how excited he was that he could smile at his bride on their wedding day and how his life was changed forever. After one last hug and a thank you, he walked away but this time with a more confident stride and with his head held high. It is in moments like this that we realize what we do does in fact change lives.

### Michelle

Michelle came in on Saturday for extractions on lower anteriors and restore with a lower partial denture. This was her primary concern because she said that only her lower teeth were visible when she talked. But I could tell that she had trained her mouth to not have her upper teeth visible because she had a single upper anterior non-restorable broken tooth. We tried to convince her that she should also get her upper teeth completed as well and that she would smile more. However she was not convinced saying "I don't smile ever, so I don't need it". So we respected her choice and sent her up to Prosthetics and Oral Surgery. The next day, she came back through Triage for additional restorative treatment. At first I couldn't recognize her...she was smiling! Thanks to Prosthetics and Oral Surgery team they convinced her to also get the upper tooth extracted and got both arches completed with new partials. When I asked her what she thought...she said "You can't take this smile away from me".

## Malpractice Insurance | By Dentists, For Dentists®



Robert Bartro, DDS  
EDIC Board Director

## Real Advocacy. Real Dentists. The EDIC Advantage For RIDA Dentist Members

Eastern Dentists Insurance Company (EDIC), the endorsed dental malpractice carrier for Rhode Island dentists, has partnered with RIDA for over 20 years. With this endorsement, RIDA members have value-added benefits as well as local representation on the EDIC Board of Directors. Former RIDA President, Dr. Robert Bartro, serves on the EDIC Board and guarantees your voice is being heard as he participates in every decision that EDIC makes and actively advocates EDIC's "By Dentists, For Dentists" philosophy.

### The EDIC Advantage:

- Board of Directors is comprised of dentists
- Proactive risk management program with FREE webinars earning CEU's
- EDIC's customer service team is personally dedicated to you
- Outstanding claims handling with a 92% win rate of claims that go to trial
- EDIC issues \$75\* policyholder dividends to all eligible RIDA insureds

**EDIC Supports Our Colleagues 100%  
Because We Are Dentists Too.  
Join EDIC Today!**

**800-898-3342 • [www.edic.com](http://www.edic.com)**



*EDIC is the Endorsed  
Dental Malpractice  
Carrier Of*



**Rhode Island  
DENTAL ASSOCIATION**



# ADA FDI WORLD DENTAL CONGRESS

---

It's been more than 20 years since the ADA annual meeting has been held in conjunction with the annual congress of the FDI World Dental Federation. The last time was in 1996 in Orlando.

That all changes in 2019.

The ADA FDI World Dental Congress will take place Sept. 4-8 at the newly renovated and expanded Moscone Center in San Francisco. It's a joint meeting of the ADA and FDI World Dental Federation with support from the California Dental Association and the San Francisco Dental Society.

"This is a great opportunity to get high-quality, low-cost education and engage with dentists from all over the world," said Dr. C. Roger Macias, Jr., chair of the ADA Advisory Committee on Annual Meetings. "It will be global education at your fingertips."

The meeting is about a month-and-a-half earlier than typical ADA annual meeting dates, so registration will commence earlier this time: Feb. 13.

As an incentive to register, this year registration is free to all attendees from North America, as well as to ADA international members.

## Yes. FREE.

---

Free registration includes access to the Exhibit Hall, free continuing education offered on the exhibit floor, and for ADA members, the Opening Ceremony and General Session. Dentists who are not members of the ADA are welcome to attend the Opening Ceremony and General Session subject to a fee.

What's special about this year's meeting?

- To simplify planning, the ADA has standardized CE lecture pricing into three brackets – \$25, \$50 and \$75 – for ADA members and dental teams.
- Enhanced continuing education offerings, with an expanded selection of hands-on workshops and small-group Campfire Sessions, as well as the new two-day ADA Dental Sleep Medicine Conference. Experiential learning opportunities at the summit will allow participants to create action plans for implementation.
- The Women in Dentistry program will continue, along with the Leadership Lessons program, and the two-day New Dentist Conference.
- Streamlined enrollment procedures will give attendees a better meeting experience. With new digital ticketing, attendees will print their badges onsite at one of several convenient locations.
- San Francisco is an attractive site for this historic joint meeting. Explore the city's fascinating neighborhoods or head out to nearby Redwood forests, charming Sausalito or wine country.



Visit [www.ada.org/meeting](http://www.ada.org/meeting)  
for more information



# A DENTAL BENEFIT IN MEDICARE

Adding a dental benefit within Medicare is a topic of conversation among agencies that advocate for seniors but also within the ADA.

The Council on Dental Benefit Programs, with support from the Council on Advocacy for Access and Prevention, submitted a Resolution to the House of Delegates, at the ADA annual meeting in October, which outlined what the council suggests as an advocacy position IF legislation to add a dental benefit to Medicare is introduced in Congress. This comes on the heels of the ADA's increasing awareness of Oral Health America's coalition of consumer advocacy groups that is pursuing conversations with legislators and regulators on adding a dental benefit to Medicare.

The Council on Dental Benefit Programs' resolution states that if legislation were introduced that would add a dental benefit to Medicare then the ADA should advocate for:

- Coverage for comprehensive services in an appropriate part within Medicare with adequate program funding.
- Reimbursement rates at or above median fees (50th percentile) as described in the current ADA Survey of Dental Fees to ensure adequate dentist participation.
- Funding for technical support for dental practice participation including adoption of health information technology standards.
- Minimal and reasonable administrative requirements for dental practice participation
- Medicare beneficiaries with the freedom to choose any dentist while continuing to receive the full Medicare benefit.

The previous chair of CAAP stated "No matter the outcome of this resolution, policy makers, legislators and members of the public look to the ADA for guidance and solutions on solving dental access issues for senior Americans. Based on the ADA vision of 'achieving optimal health for all, the ADA must take an active role in the ongoing discussions to help craft the best strategies for senior dental care."

The resolution did not pass and instead was referred to the appropriate ADA agencies so that a comprehensive strategy for addressing the needs of the growing elder care population can be addressed. The Board of Trustees recommended referral and noted that as Americans live longer, growth in the number of older adults is unprecedented. In 2014, 14.5 percent (46.3 million) of the U.S. population was age 65 and older and is projected to reach 23.5 percent (98 million) by 2060. Currently, approximately one half of the U.S. population do not see a dentist for at least one visit a year.

The OHA coalition released a white paper in July 2018 titled "An Oral Health Benefit in Medicare Part B, It's Time to Include Oral Health in Health Care," on the proposed benefit, examining need, cost and needed legislative changes. The ADA evaluated the benefit design developed by the coalition then began educating the group on the Association's perspective on the benefit design, offering our own analysis on a Medicare benefit.

Members of the Council on Dental Practice believe that any benefit for dental eldercare should be a needs-based program rather than the age-based program proposed by the Oral Health America consortium. Their recommendation is to recognize that a needs-based program maximizes the ability of the program to provide care to those who need it and cannot afford it while preserving Medicare's limited funding and other resources.

The Council on Government Affairs indicated that this is a significant issue for dentistry and seniors but believes taking the time to develop a comprehensive strategy for older adults would put the ADA in a strong position to continue to advocate for members and the patients they serve.

Some of the questions asked and discussed within the councils and board of trustees have been:

- Should the ADA advocate for a dental benefit in Medicare or do everything in its power to prevent a benefit?
- Should the ADA develop a policy that we educate or guide any entity that is trying to develop a dental benefit in Medicare to include what we think are best practices?
- Should the ADA be at the table of discussion with the coalition developing this benefit?



The reaction from ADA members on the issue seems to be mixed, based on feedback the ADA councils have received as well as correspondence to the Board of Trustees. Some believe it would be a mistake for dentistry to get involved in Medicare while others believe it is a dentists' duty to ensure seniors have access to financing support for dental care. It has become a somewhat charged and heated topic of discussion.

In some respects, it is a philosophical issue. If we are not at the table, no one will win, not our patients, communities or practices. Does just saying "No" on issues that affect our traditional means of providing dental care get us anywhere? As with Medicaid, a provider can choose to accept or not accept Medicare. Yes, there are issues around reimbursement, electronic health records, administrative requirements and yet, hasn't that been the case with many changes throughout the years? And what about ADA policy:

Elimination of Disparities in Coverage for Dental Procedures Provided Under Medicare (Trans.1993:705)

Resolved, that the Association seek legislation to provide fair and equitable treatment to all Medicare recipients by eliminating disparities in coverage for dental procedures, and be it further Resolved, that the Association seek legislation which would provide for payment of dental services under Part B of Medicare in cases where the dental procedure is necessary and directly associated with a medical procedure or diagnosis.

This is a challenging and emotional topic. Personally, I believe that at the bare minimum, the ADA needs to be at the table or, as we have heard many times before, "be on the menu".

- Sincerely,
- Judith Fisch, DDS  
First District Trustee

# eDentaCheques



**100%**  
of your donation  
helps support  
those in need



**BUY**

DentaCheques is \$169



**HELP**

Your \$169 is donated to Dental Lifeline Network, a national nonprofit helping adults with special needs get dental care.



**SAVE**

Save money on dental supplies and equipment

## 2019 DentaCheques Benefits:

**Exclusive discounts** and offers just for supporting Dental Lifeline Network

**MEGA samples:** Free products shipped directly to you



**You can change a life. Sign up today to start receiving exclusive offers at [Dentacheques.org](http://Dentacheques.org)**



**Dental Lifeline Network.**

# CONTINUING EDUCATION

REGISTER FOR ALL COURSES ONLINE: [WWW.RIDENTAL.ORG](http://WWW.RIDENTAL.ORG)



## OSHA & INFECTION CONTROL 2019

- KATHY EKLUND, RDH
- APRIL 10, 2019
- 9AM-12PM
- 3 CEUS

Infection & Prevention Control 2019 - Evaluating Your Compliance: The goal of an infection prevention and control program is to prevent health-care associated infections among patients, and injuries and illnesses in healthcare personnel. This presentation will discuss strategies for ensuring compliance with relevant CDC guidelines, OSHA regulations and other relevant recommendations, regulations, and standards.

## FORENSIC ODONTOLOGY

- RAYMOND MILLER, DDS
- MAY 22, 2019
- 9AM-12PM
- 3 CEUS

Forensic Odontology has been used historically in victim identification and bitemark evidence. Emerging dental technology is changing methods in victim identification and solving cases that reached a dead-end in the past. Bitemark analysis has come under increased scrutiny in the courtroom and have challenged the admissibility and reliability of this evidence. The controversies will be presented and participants will be able to make an educated opinion regarding the value of this evidence. The history and science of forensic dentistry will be explored as well as to what the future may hold. Dentistry will always have a role but like many aspects of our profession it is an ever changing discipline. Participants in this program will gain knowledge in the various aspects of forensic dentistry.



## ANNUAL PRESIDENTS' LUNCHEON

Our Annual Presidents' Luncheon will take place on May 22nd at 12:30pm, immediately after the "Forensic Odontology" CE course at the Quidnessett Country Club. We would love for you all to join us this year as we celebrate Dr. Jennifer Torbett's successful year as president and welcome our incoming president, Dr. Martin Elson. In addition to celebrating all our presidents, past, present, and future, we will be handing out the annual Awards of the Association.

Joining us will be Professor Albert Shimkus of the Naval War College in Newport. Professor Shimkus was selected to join the National Security Affairs (NSA) resident civilian faculty in 2006. He practiced as a CRNA for over 25 years with numerous tours in support of deployed forces, teaches electives focused on Chemical and Biological Warfare and Current Southeast Asia Issues. His areas of academic interest are the application of America's soft power as an element of the national security strategy and strategic health policy. Professor Shimkus frequently lectures on international cooperative efforts in the delivery of humanitarian assistance and disaster relief and ethical issues associated with the delivery of health care in operational military environments.

Invitations to follow. If you have any questions, please call Chris or Madeline at the RIDA Executive Office: (401) 825-7700

# CONTINUING EDUCATION

REGISTER FOR ALL COURSES ONLINE: [WWW.RIDENTAL.ORG](http://WWW.RIDENTAL.ORG)



## JUST DO IT... BETTER!

- SUSAN MCMAHON, DMD
- SEPTEMBER 18, 2019
- 9AM-4PM
- 6 CEUS

Solutions for better restorations, better workflow and better well being for dentists and teams using today's technology, materials, techniques, and equipment:

As clinicians we all have challenges in our daily practice lives:

- Are there procedures that stress out you and your team?
- How's your communication with patients and case acceptance?
- What technology fits best in your practice and your budget?
- Is chair time being used as efficiently and effectively as you would like?

Solutions to these and other challenges will be provided by going step by step through clinical cases. Using scanners, lasers, diagnostic cameras, handpieces, new restorative materials, new finishing techniques and simple tricks, your everyday procedures will be better.

## GERIATRIC DENTISTRY

- LOU GRAHAM, DDS
- NOVEMBER 13 2019
- 9AM-4PM
- 6 CEUS



Geriatric Dentistry - The Fastest Growing Demographic in Dentistry: With patients entering their 8th and 9th decades of life and even more, our role as health care providers continues to face new challenges in treating this population. As these patients walk into our offices, they present Challenges that are often unique and require customized approaches to their care.

## MEDICARE BASICS - MEDICARE STRATEGIES

TOPIC: Medicare Basics - Medicare Strategies

PRESENTER: Susan Leeming

WHEN: March 26, 2019 - 6:30PM

WHERE: RIDA Executive Office - 875 Centerville Rd., Bldg. 4, Ste. 12, Warwick, RI



When to enroll; how to enroll without claiming Social Security; how coverage compares to my current insurance; how my practice can benefit. These questions and more will be covered in a 1-hour presentation offered by independent consultant, Susan Leeming.

**TO REGISTER**

visit our website at: <https://www.ridental.org/educate/other-rida-events> OR call (401) 825-7700

Space is limited - RIDA Members and their staff only



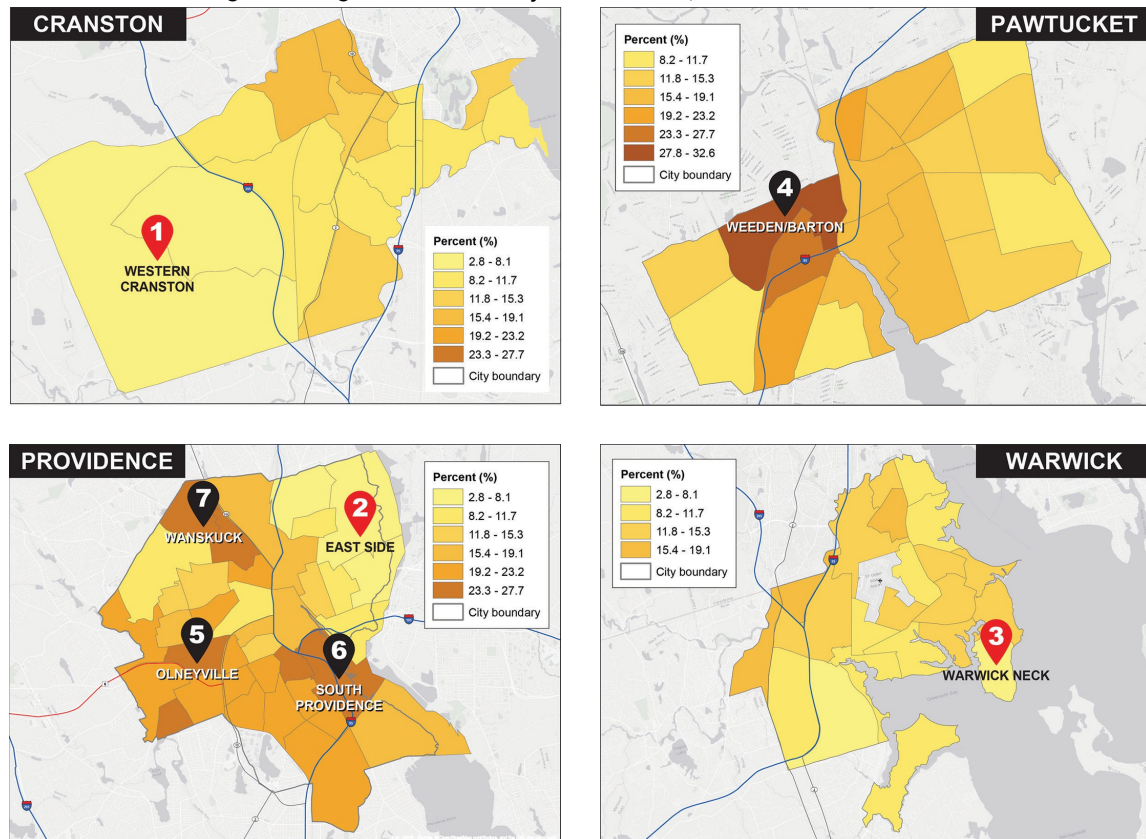
## Oral Health Outcomes and Use of Dental Services in Rhode Island's Four Largest Cities

A new analysis from the Centers for Disease Control and Prevention (CDC) called The 500 Cities Project provides important information to assist Rhode Island in reaching its goals of oral health equity and good oral health no matter the ZIP code. The project is based on model-based small area estimation. Among 13 health outcomes, 10 preventive services and habits, two are of particular interest to the oral health community: proportion age 65 and older with loss of all teeth and proportion reporting a dental visit in the past year.

### Complete Tooth Loss Age 65 and Older

A new analysis from the Centers for Disease Control and Prevention (CDC) called The 500 Cities Project provides important information to assist Rhode Island in reaching its goals of oral health equity and good oral health no matter the ZIP code. The project is based on model-based small area estimation. Among 13 health outcomes, 10 preventive services and habits, two are of particular interest to the oral health community: proportion age 65 and older with loss of all teeth and proportion reporting a dental visit in the past year.

**FIGURE 1:**  
**All Teeth Lost Among Adults Age 65 And Older By Census Tract, 2016**

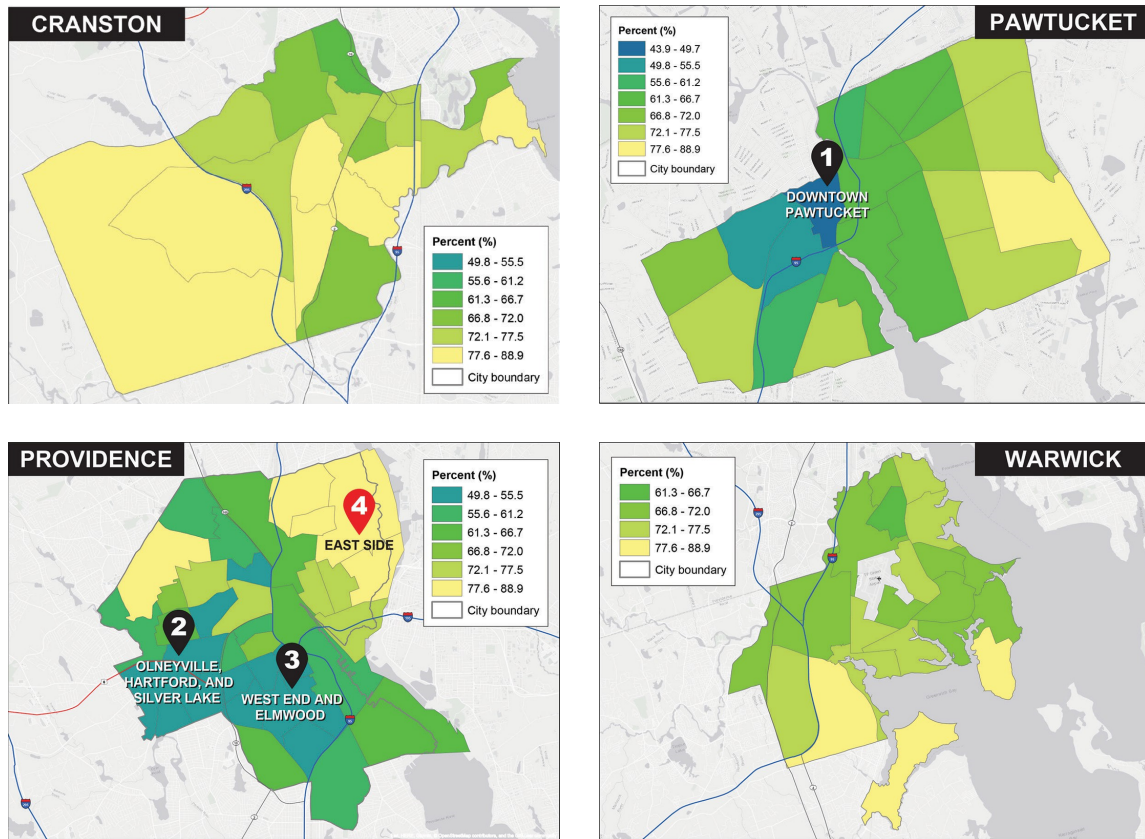


As seen in Figure 1, significant differences exist in rates of edentulism within cities, likely attributable to numerous social determinants of health including socioeconomic status, education, race/ethnicity, and provider availability. The lowest rates of 2.8-8.1% are observed in Western Cranston (1), the East Side of Providence (2), and Warwick Neck (3). Rates of two to three times greater are seen in both the downtown and Weeden/Barton (4) neighborhoods of Pawtucket and the Olneyville (5), South Providence (6), and Wanskuck (7) areas of Providence.

## Use of Dental Services

Having a dental visit in the past year plays a significant role in early detection and management of dental disease as is the regular use of preventive services such as oral prophylaxis and fluoride application. The goal of having a dental home for every Rhode Islander is achievable, but it depends on such factors as insurance coverage, provider location and availability, and oral health literacy.

**FIGURE 2:**  
**Visits To Dentist Or Dental Clinic Among Adults Age 18 Or Older, By Census Tract, 2016**



As seen in Figure 2, the lowest use of dental services is seen in Downtown Pawtucket (1) and the Olneyville, Hartford, and Silver Lake area (2) and West End and Elmwood area (3) of Providence. Rates of use in these areas of Providence are significantly lower than the overall Providence age-adjusted rate of 62.9%. Prevalence of annual dental visits on the East Side (4) of Providence is higher than average.

## Access to Dental Care

Accessibility of a dental office plays a role in utilization. Ideally, dental offices should be where they are easy to get to and potential patients who walk by may be prompted to schedule an appointment. Density of providers in a neighborhood may be assessed by calculating the ratio number of dentists per 100,000 people. Rhode Island Department of Health licensure data and census data was used to calculate ratios by ZIP code. ZIP code 02906, the East Side of Providence, was estimated to have 145 dentists per 100,000 people, 20 times greater than ZIP code 02909, the Olneyville area, where the ratio is 7.1 dentists per 100,000 people. Other neighborhoods in areas of low adult utilization in Providence, including 02905, have higher ratios at 57 dentists per 100,000 people, but this ratio is influenced by the presence of hospitals and health centers which focus primarily on children and do not impact adult utilization. In addition to low numbers of dental practices which treat adults in these neighborhoods, adults may not be able to access practices in other neighborhoods due to lack of transportation, language barriers, or acceptance of public insurance. The ratio does not tell the whole story. Western Cranston, ZIP code 02921, a rural area, has a ratio of 7.74 dentists per 100,000 people, just higher than the rate of Olneyville. Access for residents of Western Cranston is likely enhanced based on their ability to drive to neighboring communities and find offices that accept their insurance and speak their language.

To improve the regular use of dental services, outreach and education efforts are needed in addition to an adequate and well-located workforce, updated screening methods, risk assessments, and increased referrals from primary care physicians.

Work is also needed with public and private dental insurers to have a standard oral health package for adults, with acceptable reimbursement rates, that provides coverage for

- Annual oral cancer screenings;
- Annual dental examinations, prophylaxis, and x-rays;
- Coverage for periodontal care, routine restorative care, and extractions;
- Dental appliances (dentures); and
- Case management and care coordination services.

### Limitations:

Use of total tooth loss as a barometer for oral health may miss a large number of individuals who have not experienced total tooth loss yet because some teeth, potentially diseased, remain, and individuals who still have at least one tooth remaining are not counted. The removal of teeth may actually represent access to care, meaning that individuals with some remaining teeth are awaiting rehabilitation with dentures, which is a sign of care.

All data presented in this map book are model-based estimates that reflect the statistically expected prevalence of each measure. These small area estimates tend to have narrow confidence ranges and may underestimate some areas with high prevalence or overestimate some areas with low prevalence. Because the small area model cannot detect effects due to local interventions, these model-based local estimates should not be used to evaluate the effect of local public health programs, policies, or interventions. For more information please refer to <http://www.cdc.gov/500cities/>.

### Methodology:

CDC used small area estimation (SAE) methodology called multi-level regression and poststratification (MRP) that links geocoded health surveys and high spatial resolution population demographic and socioeconomic data to produce local level health-related estimates. This approach also accounts for the associations between individual health outcomes, individual characteristics, and spatial contexts and factors at multiple levels (state, county); predicts individual disease risk and health behaviors in a multi-level modeling framework and estimates the geographic distributions of population disease burden and health behaviors at city and census tract levels.

Further information on the small area estimation methodology can be obtained from:

- Multilevel Regression and Poststratification for Small-Area Estimation of Population Health Outcomes: A Case Study of Chronic Obstructive Pulmonary Disease Prevalence Using the Behavioral Risk Factor Surveillance System.
- Validation of Multilevel Regression and Poststratification Methodology for Small Area Estimation of Health Indicators from the Behavioral Risk Factor Surveillance System.
- Comparison of Methods for Estimating Prevalence of Chronic Diseases and Health Behaviors for Small Geographic Areas: Boston Validation Study, 2013

### References and Data Sources:

- 1 The CDC Behavioral Risk Factor Surveillance System 2015, 2016 data. The Census Bureau 2010 census population data, American Community Survey 2011-2015 and 2012-2016 estimates. Esri ArcGIS Online basemaps.
- 2 500 Cities: Local Data for Better Health. Division of Population Health, National Center for Chronic Disease Prevention and Health Promotion. <https://www.cdc.gov/500cities/index.htm> , Accessed January 22, 2019.
- 3 Rhode Island Department of Health Licensing Database <http://health.ri.gov/lists/licenses/> Accessed January 22, 2019.
- 4 Munson B, Vujicic M. Supply of full-time equivalent dentists in the U.S. expected to increase steadily. Health Policy Institute Research Brief. American Dental Association. July 2018. Available from: [http://www.ada.org/~media/ADA/Science%20and%20Research/HPI/Files/HPIBrief\\_0718\\_1.pdf](http://www.ada.org/~media/ADA/Science%20and%20Research/HPI/Files/HPIBrief_0718_1.pdf).

Dental providers can identify nonmedical opioid use (using someone else's medications or in ways and in amounts not prescribed) and connect patients to resources for substance use disorder







# 154<sup>th</sup> Annual CHARTER OAK DENTAL MEETING

May 8-10, 2019  Mohegan Sun

## Get Ready to Reach for the Stars!

### Here are just some things you've come to expect from CSDA's Annual Meeting:

- 65 courses to choose from. Register early to guarantee your spot!
- An Exhibit Hall featuring 125 companies showcasing their latest products and services.
- Fun, themed parties and networking opportunities.
- The latest technologies including CSDA's Annual Meeting mobile app!
- A high quality dental meeting with low registration and course fees.

If your goal is fulfilling your CE requirements for license renewal, we've got you covered! See page 10 of the Program Guide for a complete summary for dentists, hygienists and dental assistants. If your goal is to focus on your personal health and wellness, we've got you covered there, too! We've assembled a program that includes a wide range of interesting and timely topics – there is truly something for everyone!

**Several early sell-outs are expected.  
We strongly encourage early registration.**

### Interested in FREE CE and FREE lunch?

We need additional volunteers to help moderate courses during the meeting. If you would be interested in learning more about how you can take your courses for FREE in exchange for co-moderating with a "seasoned" volunteer, simply check the box on the paper registration form or during your online registration. All potential volunteers will be contacted in April when we know where our greatest needs are. *If you are officially assigned to any courses you've registered for, you will receive your lunch ticket(s) on-site and course fees get refunded the week after the meeting.*

Be sure to "Like" the CSDA Annual Meeting on Facebook. It's the best way to get the latest news AND be eligible for special contests leading up to the meeting!



**REGISTRATION  
OPENS  
FEBRUARY 1<sup>ST</sup>**

Visit  
[csdadentalmeeting.com](http://csdadentalmeeting.com)  
for complete details.

### IMPORTANT DATES TO REMEMBER:

**April 1<sup>st</sup>** – After this date, registration fees increase.

**April 16<sup>th</sup>** – Deadline to make hotel reservations under our discounted room block.

**April 26<sup>th</sup>** – Deadline to pre-register and receive your meeting credentials in advance by mail.

### EXHIBIT HALL HOURS:

**Thursday, May 9<sup>th</sup>** – 8:30 am to 5:30 pm  
**Friday, May 10<sup>th</sup>** – 8:30 am to 5:30 pm

*Extended trade show hours on Friday  
including an exciting closing reception  
that begins at 3:30 pm!*

### NEED A COPY OF THE OFFICIAL PROGRAM GUIDE?



Download the printer-friendly, PDF version anytime from our website or call the CSDA Central Office and we would be happy to mail you one: (860) 378-1800.



# NEW MEMBERS

Please welcome the following dentists as new members of the RIDA

**Leslie Bumpus, DDS**

New York University College of Dentistry, 2017  
Employed: 36 Bridge Way, Pascoag

**Meaghan McCauley, DMD**

Tufts University School of Dental Medicine, 2017  
New York Medical College, 2018  
Employed: 81 Danielson Pike, North Scituate

**Colleen Yazgi, DMD**

Tufts University School of Dental Medicine, 2018  
Employed: 77 Aquidneck Ave., Middletown

## IN MEMORIAM

Robert Champagne, DMD  
Edward Ferry, DDS  
Estella Flores, DMD  
Clark Sammartino, DMD

# RETIRED MEMBERS

Be sure to thank these members for their commitment to dentistry as they enter retirement

**John DeMello, DDS**

38 Years of Membership

## ADA ENDORSED PROGRAMS



The products and services you'll find here can help manage the business-side of your practice, as well as your personal life, more smoothly and efficiently. Make your choice with confidence knowing these resources have been thoroughly researched and endorsed for Members of the American Dental Association.

Visit [adamemberadvantage.com](http://adamemberadvantage.com) for more information

## RIDA ENDORSED SPONSORS



# RIDA CALENDAR

## MARCH

- **March 12**  
RIDA Board of Trustees Meeting  
RIDA Executive Office 6:30pm
- **March 19**  
Component Restructure Ad Hoc Committee Meeting  
RIDA Executive Office 6:30pm
- **March 29-31**  
New England Dental Leadership Conference  
(NEDLC)  
Lincoln, NH

## APRIL

- **April 9**  
RIDA Board of Trustees Meeting  
RIDA Executive Office 6:30pm
- **April 10**  
OSHA & Infection Control 2019  
Kathy Eklund, RDH  
9:00am-12:00pm  
Quidnessett Country Club

## MAY

- **May 14**  
RIDA Board of Trustees Meeting  
RIDA Executive Office 6:30pm
- **May 21**  
RIDA House of Delegates Meeting  
RIDA Executive Office 6:30pm
- **May 22**  
**Continuing Education**  
Raymond Miller, DDS  
9:00am-12:00pm  
Quidnessett Country Club
- **May 31-June 1**  
Maine Dental Association Annual Convention  
Harborside Hotel, Bar Harbor, ME

## JUNE

- **June 11**  
RIDA Board of Trustees Meeting  
Restaurant TBD 6:30pm

## JULY

- **July 4**  
RIDA Executive Office - CLOSED
- **July 22-23**  
ADA State Presidents-Elect Conference
- **July 23-34**  
ADA Management Conference
- **July 25-26**  
ADA Conference on Membership

\*\* All dates are subject to change. Please check the website for any updates.

# 3,000



*Dental Lifeline*  
Network • Rhode Island  
More than Dentistry. Life®

PATIENTS SERVED  
DONATED DENTAL  
SERVICES (DDS)

---

## CLASSIFIEDS

**Medicare Strategies** - consulting for employer groups or individuals. Professional guidance to choose the right Medicare plan for you. Call or text (401) 965-0270. Susan Leeming, Independent Consultant & Broker.

**Associate Needed:** looking for a associate with an opportunity possibly leading to partnership. We are a high tech general practice with 2 GP's, 5 hygienists, a periodontist on site every other week. Cerec, digital radiography, Invisalign, 6MS, Eaglesoft and more.

Contact:

Dental Arts Group

1136 Hartford Ave. Johnston, RI 02919

(401) 521-3661





## RHODE ISLAND DENTAL ASSOCIATION

875 Centerville Rd.

Bldg. 4, Suite 12

Warwick, RI 02886

ADDRESS SERVICE REQUESTED

*Undiscovered Italy*

# APULIA

844-205-1171

<http://ada.ahitravel.com>

Spend seven nights in Polignano a Mare and explore Apulia, Italy's unrivalled southern destination. Witness the region's architecture, villages and historical sites during daily excursions. See an ancient amphitheater, visit cave dwellings and wander labyrinthine passageways. Along the way, meet friendly locals and taste regional flavors. For solo travelers, there is no single supplement.

